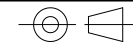


ALL DIMENSIONS IN mm

DO NOT SCALE

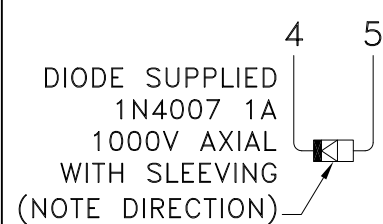
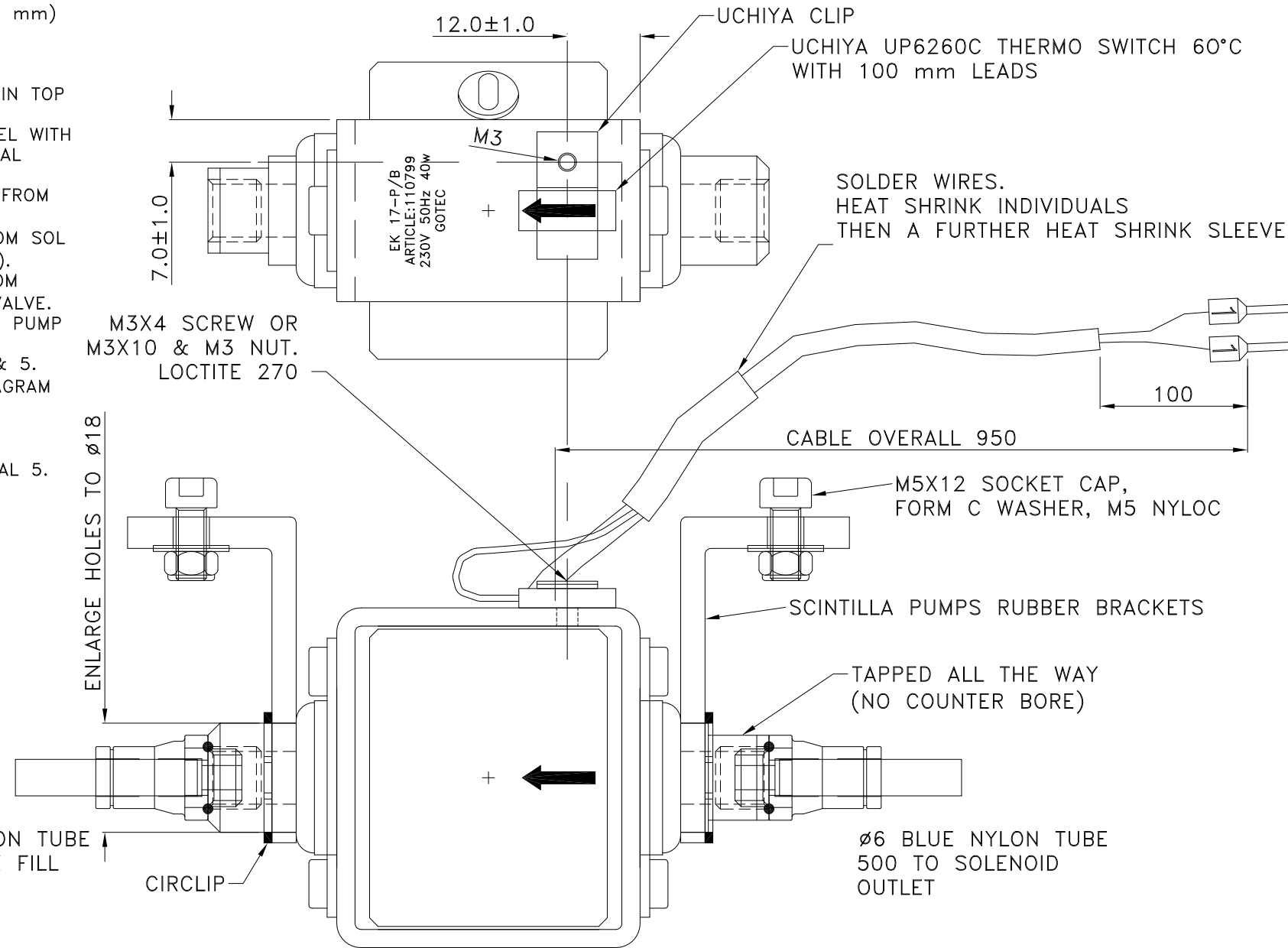
IF IN DOUBT ASK



3rd ANGLE PROJECTION

AFS TO AFP CONVERSION (15 AND 22 mm)

1. ISOLATE POWER AND SHUT INLET SERVICING VALVE.
2. REMOVE & DISCARD BLACK PLUGS IN TOP PANEL.
3. FIT PUMP HANGING FROM TOP PANEL WITH FLOW ARROW POINTING LEFT & THERMAL CUT-OUT ON TOP.
4. REMOVE AND DISCARD BLUE HOSE FROM OUTLET (LEFT) SOLENOID.
5. CONNECT 500 mm BLUE HOSE FROM SOL OUTLET (LEFT) TO PUMP INLET (RIGHT).
6. CONNECT 560 mm BLUE HOSE FROM PUMP OUTLET (LEFT) TO QUICK FILL VALVE.
7. REMOVE CONTROL BOX LID & PASS PUMP CABLE THROUGH UNUSED GLAND.
8. FIT DIODE BETWEEN TERMINALS 4 & 5. (SILVER BAR TO 4) – SEE WIRING DIAGRAM INSIDE LID – AM052*.
9. CONNECT BLUE WIRE TO NEUTRAL (TERMINAL 6).
10. CONNECT BROWN WIRE TO TERMINAL 5.
11. TIGHTEN GLAND, REPLACE COVER, RESTORE POWER AND WATER.



Ø6 BLUE NYLON TUBE 560 TO QUICK FILL VALVE

ARROW VALVES LTD
68 HIGH STREET
TRING HERTS
HP23 4AG
Tel: 01442 823 123 Fax: 01442 823 234
e-mail: info@arrowvalves.co.uk
web: www.arrowvalves.co.uk

TITLE: **AFPUMP – AFS TO AFP CONVERSION**

DRN: SHG CHECKED BY: DATE: ©2010

This drawing is the property of Arrow Valves Ltd and must not be copied without prior written permission

MATERIAL:

FINISH: SCALE: 100%

DRG No: AA072A DATE: 03/05/11