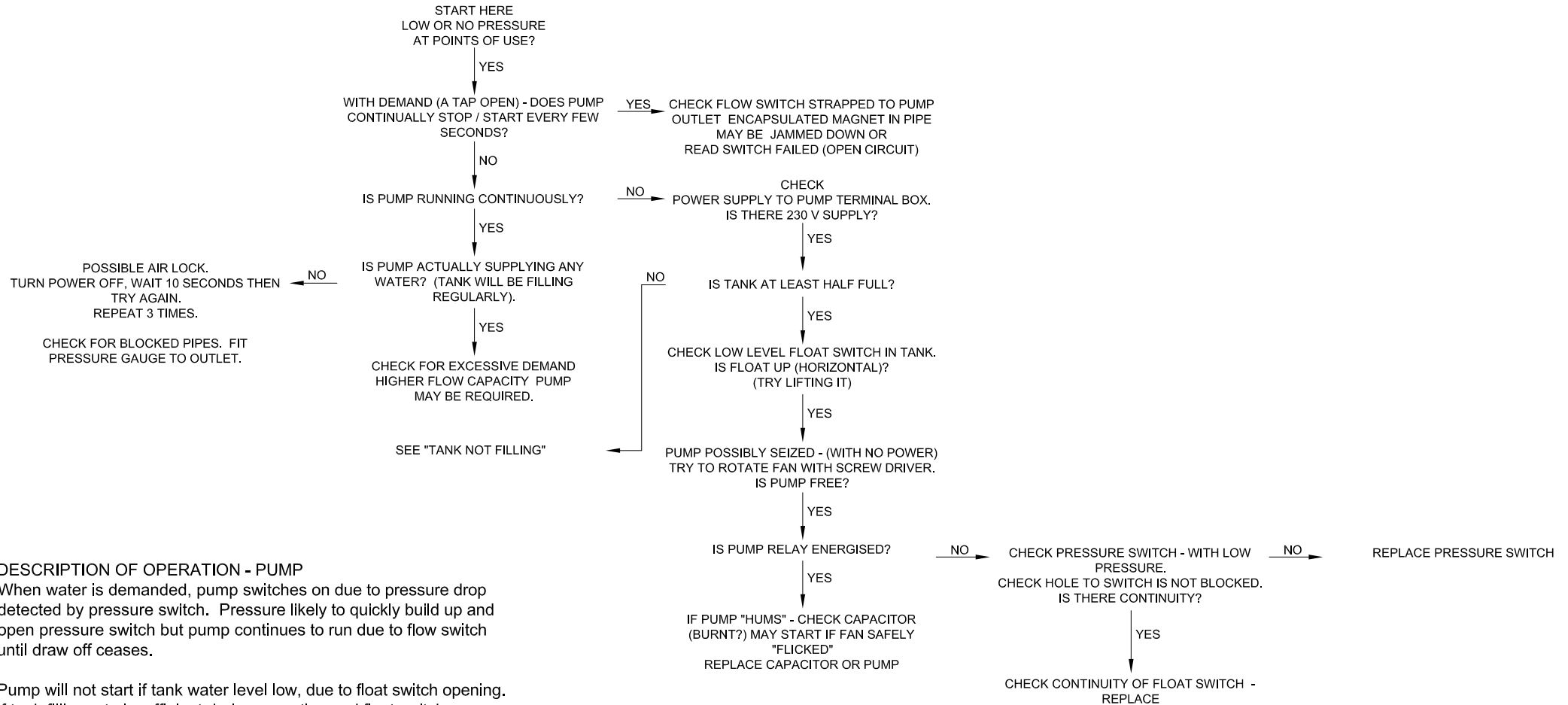


# SYMPTOM – LOW PRESSURE – PAGE 1 OF 4

APPLICABLE TO "MIDI-BREAK" BTMIDI-1

SEE WIRING DIAGRAM – AM125\* (INSIDE CONTROL BOX LID AND ONLINE)  
**WARNING! – MAINS VOLTAGE – ISOLATE ELSEWHERE BEFORE ELECTRICAL MAINTENANCE**



## DESCRIPTION OF OPERATION - PUMP

When water is demanded, pump switches on due to pressure drop detected by pressure switch. Pressure likely to quickly build up and open pressure switch but pump continues to run due to flow switch until draw off ceases.

Pump will not start if tank water level low, due to float switch opening. If tank filling rate insufficient during operation and float switch opens, pump continues to run due to closed flow switch until pump runs dry and stops. (This method of pump protection avoids short cycling since pump will not restart until float switch closes).

ARROW VALVES LTD  
 68 HIGH STREET  
 TRING HERTS  
 HP23 4AG  
 Tel: 01442 823 123 Fax: 01442 823 234  
 e-mail: info@arrowvalves.co.uk  
 web: www.arrowvalves.co.uk



TITLE: **BTMIDI-1 FAULT FINDING CHART**

DRN: SHG CHECKED BY: DATE: ©2010

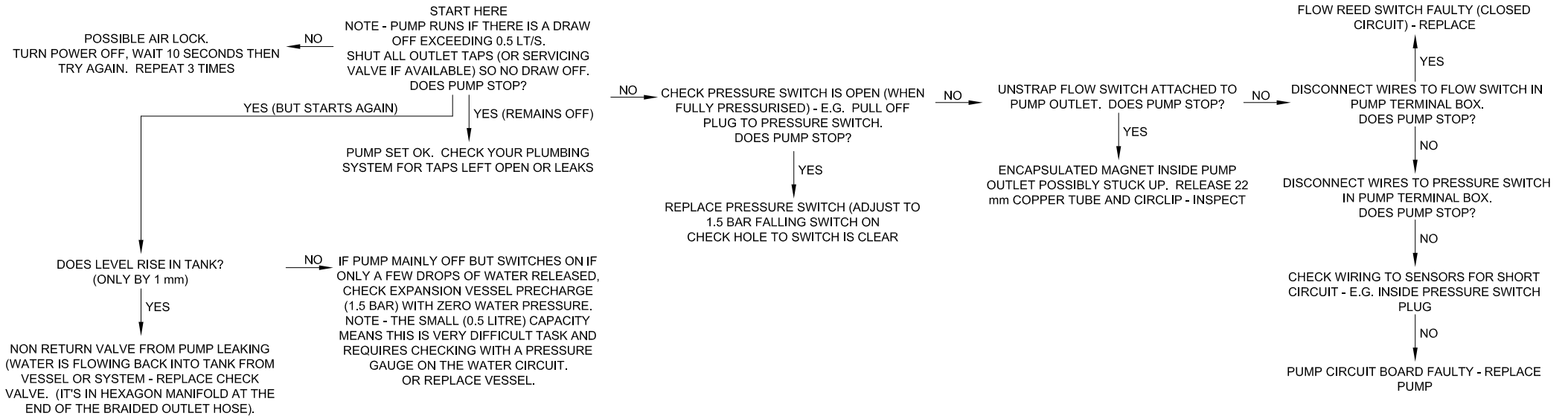
This drawing is the property of Arrow Valves Ltd and must not be copied without prior written permission

MATERIAL:

FINISH: SCALE: 100%

DRG No: AM155A DATE: 19/04/10

**SYMPTOM – PUMP NOT STOPPING / STARTING TOO FREQUENTLY – PAGE 2 OF 4**  
**APPLICABLE TO "MIDI-BREAK" BTMIDI-1 AND OBSOLETE BTMIDI-2 AND BTMIDI-3**  
**SEE WIRING DIAGRAM – AM125\* (INSIDE CONTROL BOX LID AND ONLINE)**  
**WARNING! – MAINS VOLTAGE – ISOLATE ELSEWHERE BEFORE ELECTRICAL MAINTENANCE**



**DESCRIPTION OF OPERATION - PUMP NOT STOPPING**

The pump will run if either of the two switches is closed - pressure switch or flow switch. A faulty switch can be eliminated by removing from circuit one at a time. If both switches are open and pump runs, this suggests a faulty pump circuit board.

A small draw off (e.g. leak) on the outlet system will cause the pump to regularly start.

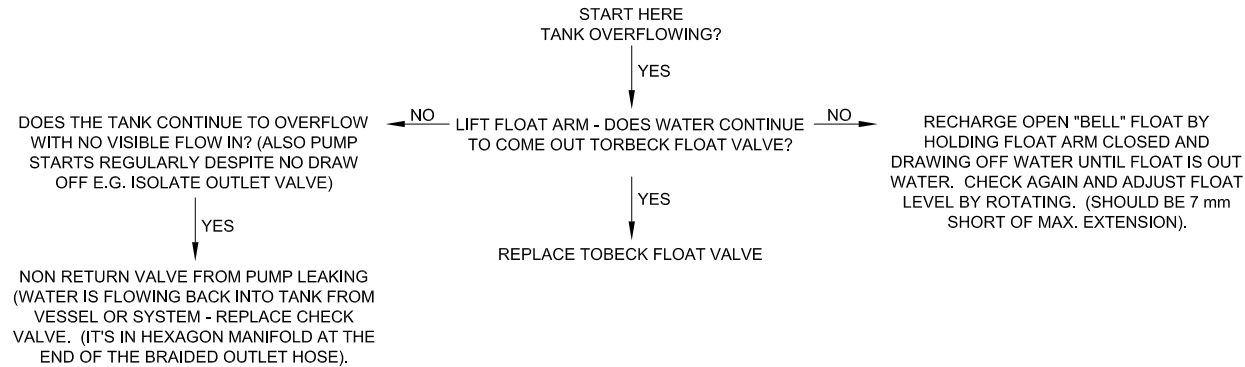
ARROW VALVES LTD  
 68 HIGH STREET  
 TRING HERTS  
 HP23 4AG  
 Tel: 01442 823 123 Fax: 01442 823 234  
 e-mail: info@arrowvalves.co.uk  
 web: www.arrowvalves.co.uk



<b>TITLE: BTMIDI-1 FAULT FINDING CHART</b>			
DRN: SHG	CHECKED BY:	DATE:	©2010
This drawing is the property of Arrow Valves Ltd and must not be copied without prior written permission			

MATERIAL:	
FINISH:	SCALE: 100%
DRG No: AM155A	DATE: 19/04/10

**SYMPTOM – TANK OVERFLOWING – PAGE 3 OF 4**  
**APPLICABLE TO "MIDI-BREAK" BTMIDI-1 AND OBSOLETE BTMIDI-2 AND BTMIDI-3**  
**SEE WIRING DIAGRAM – AM125\* (INSIDE CONTROL BOX LID AND ONLINE)**  
**WARNING! – MAINS VOLTAGE – ISOLATE ELSEWHERE BEFORE ELECTRICAL MAINTENANCE**



**DESCRIPTION OF OPERATION - TANK OVERFLOWING**

If the tank overflows this is normally due to the filling device (Torbeck Flow Valve) not closing.

Water can return to the tank if the non return valve is faulty.

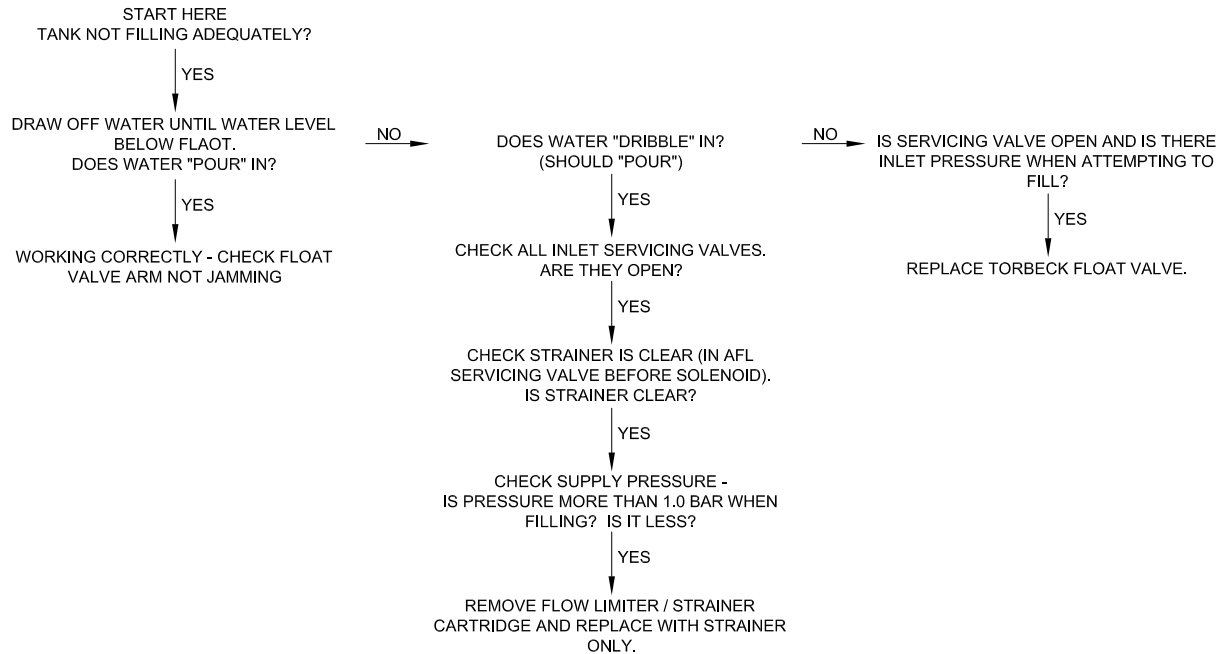
ARROW VALVES LTD  
 68 HIGH STREET  
 TRING HERTS  
 HP23 4AG  
 Tel: 01442 823 123 Fax: 01442 823 234  
 e-mail: info@arrowvalves.co.uk  
 web: www.arrowvalves.co.uk



TITLE: <b>BTMIDI-1 FAULT FINDING CHART</b>		MATERIAL:	
DRN: SHG	CHECKED BY:	DATE:	©2010
This drawing is the property of Arrow Valves Ltd and must not be copied without prior written permission			

FINISH:		SCALE: 100%
DRG No: <b>AM155A</b>	DATE: 19/04/10	

**SYMPTOM – TANK NOT FILLING ADEQUATELY – PAGE 4 OF 4**  
**APPLICABLE TO "MIDI-BREAK" BTMIDI-1 AND OBSOLETE BTMIDI-2 AND BTMIDI-3**  
**SEE WIRING DIAGRAM – AM125\* (INSIDE CONTROL BOX LID AND ONLINE)**  
**WARNING! – MAINS VOLTAGE – ISOLATE ELSEWHERE BEFORE ELECTRICAL MAINTENANCE**



**DESCRIPTION OF OPERATION - INADEQUATE FILLING**

No filling at all could simply be due to no supply pressure or Torbeck float arm stuck.

Slow filling likely to be due to a partially blocked strainer in the AFL servicing valve or low supply pressure.

ARROW VALVES LTD  
 68 HIGH STREET  
 TRING HERTS  
 HP23 4AG  
 Tel: 01442 823 123 Fax: 01442 823 234  
 e-mail: info@arrowvalves.co.uk  
 web: www.arrowvalves.co.uk



<b>TITLE: BTMIDI-1 FAULT FINDING CHART</b>			
DRN: SHG	CHECKED BY:	DATE:	©2010
This drawing is the property of Arrow Valves Ltd and must not be copied without prior written permission			

MATERIAL:	
FINISH:	SCALE: 100%
DRG No: <b>AM155A</b>	DATE: 19/04/10