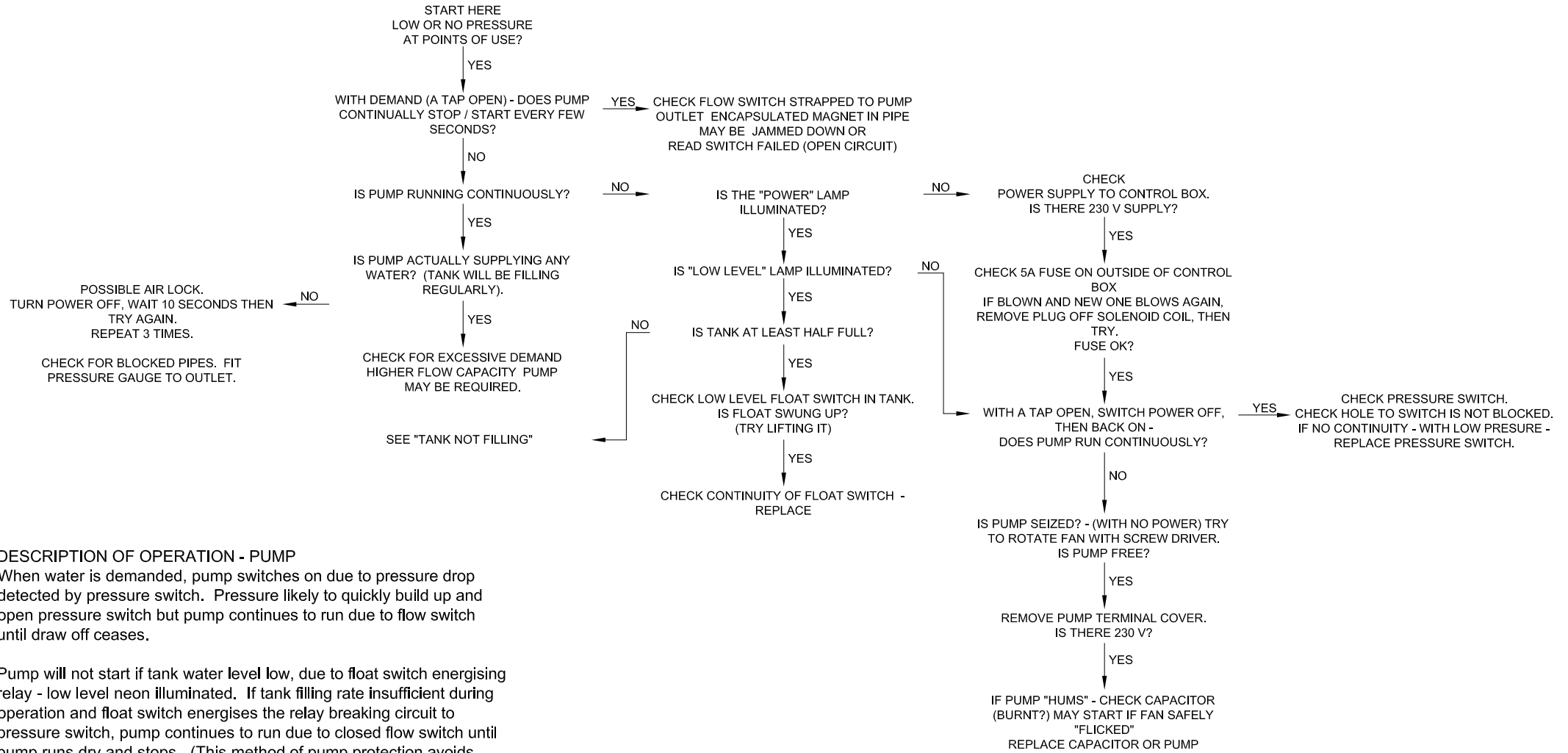


SYMPTOM – LOW PRESSURE – PAGE 1 OF 4

APPLICABLE TO "MIDI-BREAK" BTMIDI-3A

SEE WIRING DIAGRAM – AM143* (INSIDE CONTROL BOX LID AND ONLINE)

WARNING! – MAINS VOLTAGE – ISOLATE ELSEWHERE BEFORE ELECTRICAL MAINTENANCE



DESCRIPTION OF OPERATION - PUMP

When water is demanded, pump switches on due to pressure drop detected by pressure switch. Pressure likely to quickly build up and open pressure switch but pump continues to run due to flow switch until draw off ceases.

Pump will not start if tank water level low, due to float switch energising relay - low level neon illuminated. If tank filling rate insufficient during operation and float switch energises the relay breaking circuit to pressure switch, pump continues to run due to closed flow switch until pump runs dry and stops. (This method of pump protection avoids short cycling since pump will not restart until float switch closes).

ARROW VALVES LTD
68 HIGH STREET
TRING HERTS
HP23 4AG
Tel: 01442 823 123 Fax: 01442 823 234
e-mail: info@arrowvalves.co.uk
web: www.arrowvalves.co.uk



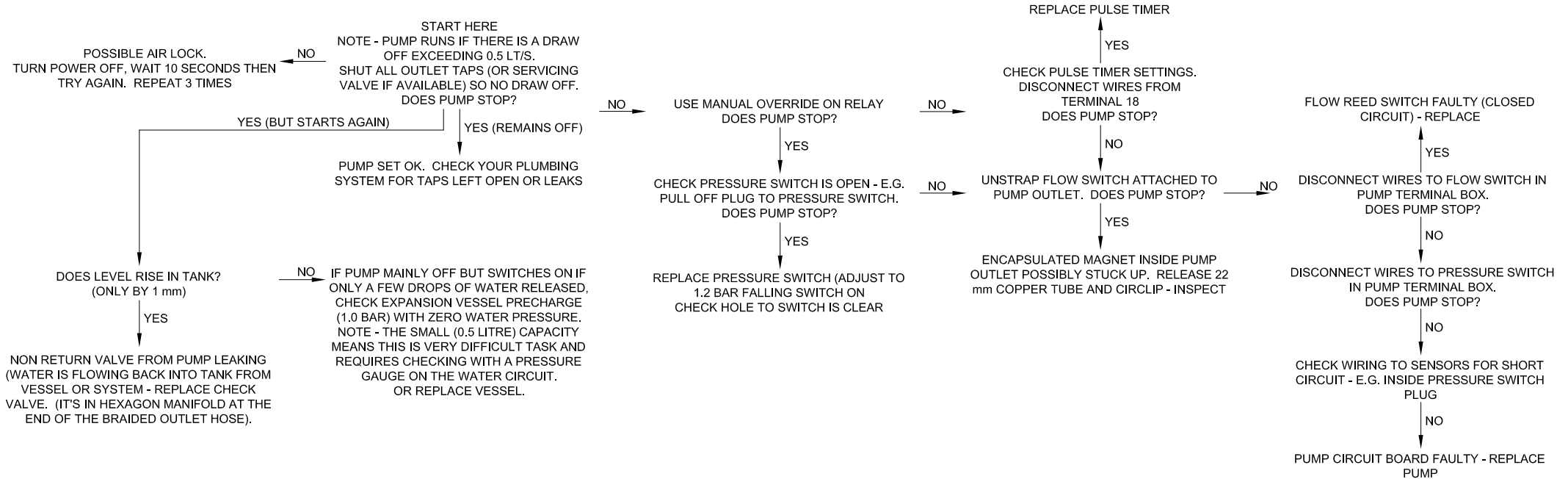
TITLE: BTMIDI-3A FAULT FINDING CHART		MATERIAL:	
DRN: SHG	CHECKED BY:	DATE:	SCALE: 100%
©2010		DRG No: AM154B DATE: 18/10/10	
This drawing is the property of Arrow Valves Ltd and must not be copied without prior written permission			

SYMPTOM – PUMP NOT STOPPING / STARTING TOO FREQUENTLY – PAGE 2 OF 4

APPLICABLE TO "MIDI-BREAK" BTMIDI-3A

SEE WIRING DIAGRAM – AM143* (INSIDE CONTROL BOX LID AND ONLINE)

WARNING! – MAINS VOLTAGE – ISOLATE ELSEWHERE BEFORE ELECTRICAL MAINTENANCE



DESCRIPTION OF OPERATION - PUMP NOT STOPPING

The pump will run if any of the three switches is closed - pressure switch, flow switch or pulse timer. A faulty switch can be eliminated by removing from circuit one at a time. If all switches open and pump runs, this suggests a faulty pump circuit board.

A small draw off (e.g. leak) on the outlet system will cause the pump to regularly start.

ARROW VALVES LTD
68 HIGH STREET
TRING HERTS
HP23 4AG
Tel: 01442 823 123 Fax: 01442 823 234
e-mail: info@arrowvalves.co.uk
web: www.arrowvalves.co.uk



TITLE: BTMIDI-3A FAULT FINDING CHART			
DRN: SHG	CHECKED BY:	DATE:	©2010
This drawing is the property of Arrow Valves Ltd and must not be copied without prior written permission			

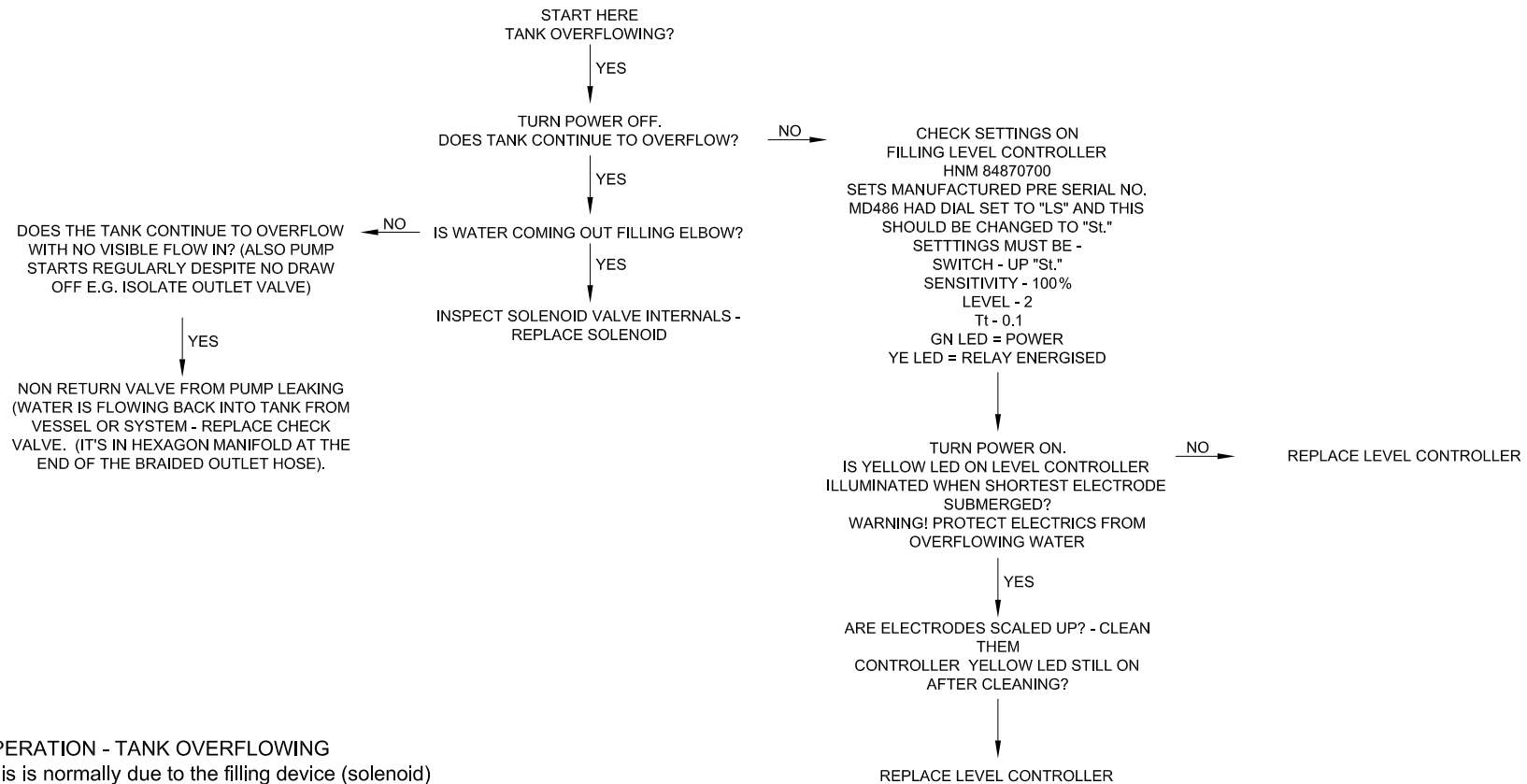
MATERIAL:	
FINISH:	SCALE: 100%
DRG No: AM154B	DATE: 18/10/10

SYMPTOM – TANK OVERFLOWING – PAGE 3 OF 4

APPLICABLE TO "MIDI-BREAK" BTMIDI-3A

SEE WIRING DIAGRAM – AM143* (INSIDE CONTROL BOX LID AND ONLINE)

WARNING! – MAINS VOLTAGE – ISOLATE ELSEWHERE BEFORE ELECTRICAL MAINTENANCE




DESCRIPTION OF OPERATION - TANK OVERFLOWING

If the tank overflows this is normally due to the filling device (solenoid) not closing. If it is running full bore the fault likely to be electrical, where the solenoid is wrongly powered open. A dribble is likely to be due to debris in the solenoid or solenoid mechanical failure.

Water can return to the tank if the non return valve is faulty.

ARROW VALVES LTD
68 HIGH STREET
TRING HERTS
HP23 4AG
Tel: 01442 823 123 Fax: 01442 823 234
e-mail: info@arrowvalves.co.uk
web: www.arrowvalves.co.uk



TITLE: **BTMIDI-3A FAULT FINDING CHART**

DRN: SHG CHECKED BY: DATE: ©2010

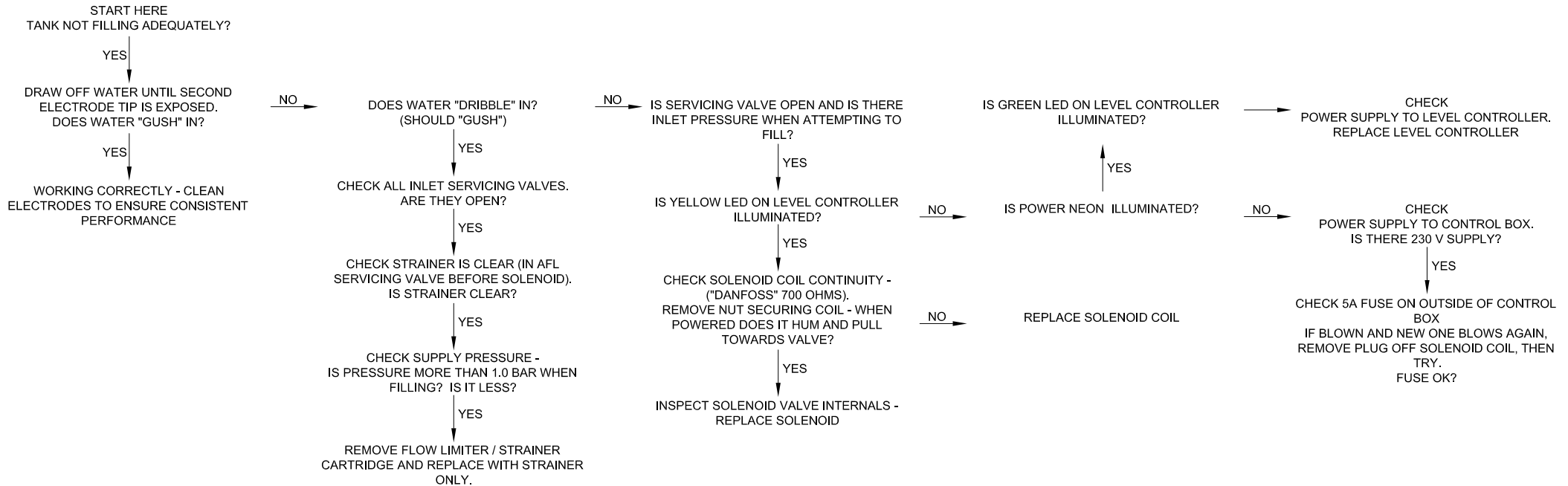
This drawing is the property of Arrow Valves Ltd and must not be copied without prior written permission

MATERIAL:

FINISH: SCALE: 100%

DRG No: **AM154B** DATE: 18/10/10

SYMPTOM – TANK NOT FILLING ADEQUATELY – PAGE 4 OF 4
APPLICABLE TO "MIDI-BREAK" BTMIDI-3A
SEE WIRING DIAGRAM – AM143* (INSIDE CONTROL BOX LID AND ONLINE)
WARNING! – MAINS VOLTAGE – ISOLATE ELSEWHERE BEFORE ELECTRICAL MAINTENANCE



DESCRIPTION OF OPERATION - INADEQUATE FILLING

No filling at all could simply be due to no supply pressure or an electrical failure - solenoid not powered.

Slow filling likely to be due to a partially blocked strainer in the AFL servicing valve or low supply pressure.

ARROW VALVES LTD
 68 HIGH STREET
 TRING HERTS
 HP23 4AG
 Tel: 01442 823 123 Fax: 01442 823 234
 e-mail: info@arrowvalves.co.uk
 web: www.arrowvalves.co.uk



TITLE: **BTMIDI-3A FAULT FINDING CHART**

DRN: SHG CHECKED BY: DATE: ©2010

This drawing is the property of Arrow Valves Ltd and must not be copied without prior written permission

MATERIAL:

FINISH: SCALE: 100%

DRG No: AM154B DATE: 18/10/10