

Tap Box – Secure Hose Union Tap – Tamperproof/Frost Resistant Models HUTB, HUTBS & HUTBT - Datasheet

Description

Compact surface mounted stainless steel box with spherical type tap and hose union connection. The tap is foam insulated and therefore offers reasonable frost protection. For a concealed / telescopic tap – refer to "Conceal-A-Tap" model HUC datasheet.

The box has a hinged lid, which can be padlocked closed. A hose shield is available as an extra, which improves the frost protection and prevents unauthorised removal of the hose or DB Pipe Interrupter. Two standard models of Tap Box are available -

Model **HUTB** is rear entry, where the copper tube passes through the wall. This arrangement offers good frost protection since none of the pipe is exposed. The factory-fitted 350 mm length of copper tube is cut to length after installation.

Model **HUTBS** is bottom entry, where the supply pipe is run vertically up the outside surface of the wall (beneath Tap Box).

Model **HUTBT** is top entry, where the supply pipe is run vertically up the outside surface of the wall (above Tap Box).

Specification

Pressure Supply	10 bar max.
Inlet (HUTB)	15 mm or 22 mm
Inlet (HUTBS)	½" FBSPP, 15 comp, 20/25 MDPE
Inlet (HUTBT)	½" FBSPP
Outlet	¾" Male BSPP - Brass Inter-lock fittings recommended
Box material	304 Stainless Steel
Approval (HUTB/HUTBS)	KIWA UK A040757

Servicing

The spherical valve features maintenance free PTFE seats. It is possible to tighten or replace the spindle PTFE seal.

Options

The standard finish is polished stainless. Optional hose shield and padlock. For complete assembly with protected supply pipe – see "Tap Guard" model HUTG on page 2.

Model HUTB
(shown with optional padlock and hose connector)
Polished stainless steel box.
The rear entry copper tube passes through the wall (use sleeve or insulation) and is cut to length after installation.
For surface run external supply pipe, use model HUTBS, HUTBT or HUTG – see page 2

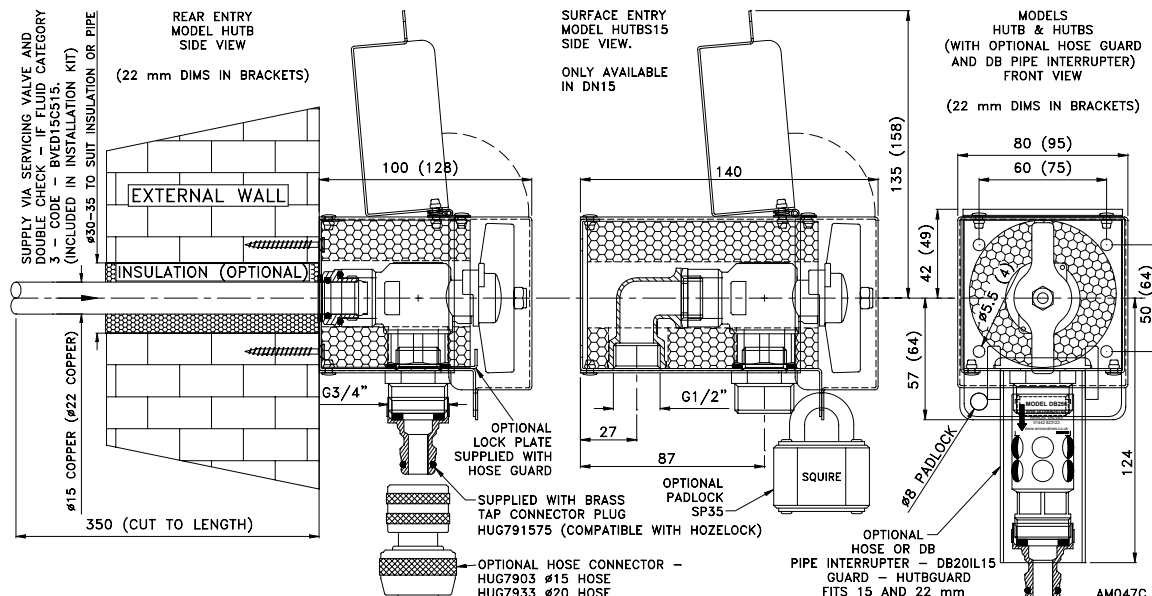


Water Regulations

The local water company can "risk assess" the proposed installation and determine the level of protection required (G15.18). A Double Check Valve is the minimum backflow protection required for Fluid Category 3 applications – model ED132 or ED515 (very low headloss). A DB Pipe Interrupter can be fitted for certain Fluid Category 4 applications. By default, all non-house HU taps are Fluid Category 5 (G6.1e) requiring a dedicated Break Tank and Booster Set with type AB air gap (model BTAB). A servicing valve should be fitted to the supply (G11.1).

Codes and Descriptions

Size	Code	Description
½"	HUTB15	Hose Union Tap Box c/w Copper Tube
½"	HUTBS15	Hose Union Tap Box - Surface Entry FBSPP
½"	HUTBS15C	Hose Union Tap Box - Surface Entry Comp.
½"	HUTBT15	Hose Union Tap Box – Top Entry FBSPP
¾"	HUTB22	Hose Union Tap Box c/w Copper Tube
½"	HUTBS20	Hose Union Tap Box - Surface Entry 20 MDPE
½"	HUTBS25	Hose Union Tap Box - Surface Entry 25 MDPE
	HUSHIELD	Hose Connection/DB Pipe Interrupter Shield
	SP35	Padlock c/w 2 Keys KA - Std Shackles
½"	HUTBINKIT (for HUTB only)	HUTB Installation Kit – servicing valve, ED515 double check valve, Tectite elbow, HUG7903 brass hose connector and installation fasteners. 15 mm
15 mm	BVED15C515	Ball Valve Full Bore & Low Loss DCV Comp
DN15	HUG7903	Hose Connector Inter-Lock Socket
DN20	HUG7933	Hose Connector Inter-Lock Socket



Arrow Valves Ltd

Tel: 01442 823123 Fax: 01442 823234

www.arrowvalves.co.uk
info@arrowvalves.co.uk

Arrow Valves Ltd reserve the right to change specifications, design and materials at any time without notice.
All unit-less dimensions in mm.
© Copyright Arrow Valves Ltd 2004-2009



“Tap Guard” – Guarded Hose Union Tap with Pipe Cover

Model HUTG - Tamperproof/Frost Resistant - Datasheet

Description

Guarded hose union tap with stainless steel supply pipe cover. The tap and supply pipe are foam insulated and therefore reasonably well frost protected.

The assembly should be fixed to an exterior wall and the supply pipe (typically 20 or 25 mm MDPE) is run vertically up the **outside** of the wall. (If the supply pipe is inside the building – see Tap Box – page 1). The 800 mm long pipe cover is attached to the wall with four stainless steel screws. This pipe cover is intended to run to the ground, thus mechanically and thermally protecting the supply pipe and insulation.

Access to the tap is via the hinged lid, which can be padlocked closed. A hose shield is available as an extra, which improves the frost protection and prevents unauthorised removal of the hose or DB Pipe Interrupter.

The assembly includes a servicing valve, Double Check Valve (ED515), insulation, tap connector plug (HUG791575) and ten stainless steel fixing screws.

Specification

Pressure Supply	10 bar max.
Inlet	20, 25 MDPE, ½" FBSPP, 15 comp
Outlet	¾" Male BSPP - Brass Inter-lock fittings recommended
Box and cover material	304 Stainless Steel
Approval	KIWA UK A040757

Servicing

The spherical valve features maintenance free PTFE seats. It is possible to tighten or replace the spindle PTFE seal.

Options

The standard finish is polished stainless. Optional – padlock, hose connector sockets, hose shield.



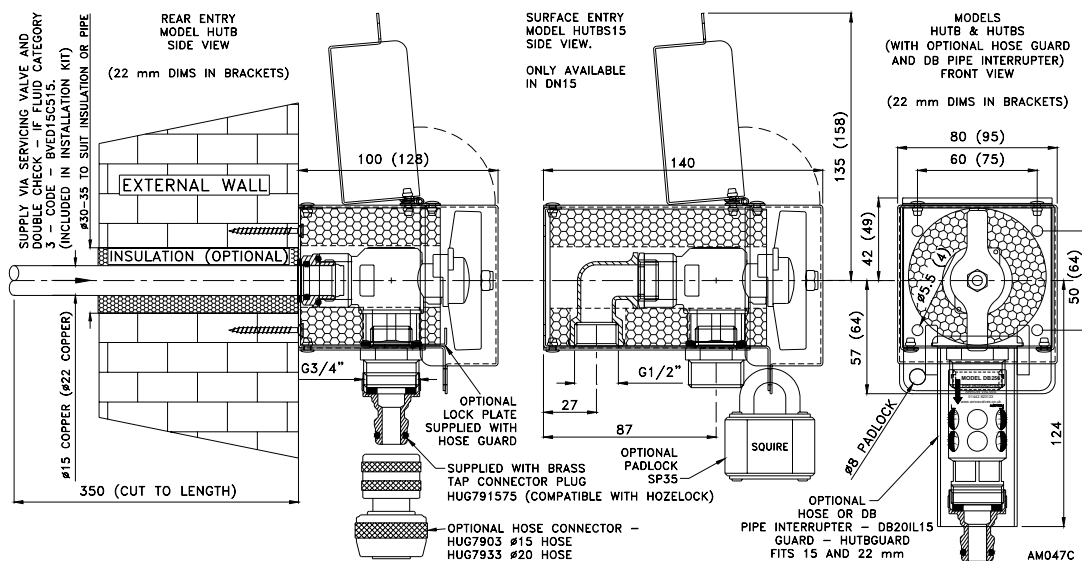
Model HUTG
(shown with optional hose shield)
Polished stainless housing.
Incorporating servicing and Double Check Valves

Water Regulations

The local water company can “risk assess” the proposed installation and determine the level of protection required (G15.18). A Double Check Valve is the minimum backflow protection required for Fluid Category 3 applications – model ED132 or ED515 (very low headloss). Supply via an RPZ valve for Fluid Category 4. By default, all non-house HU taps are Fluid Category 5 (G6.1e) requiring a dedicated Break Tank and Booster Set with type AB air gap (model BTABV). A servicing valve should be fitted to the supply (G11.1).

Codes and Descriptions

Size	Code	Description
½"	HUTG15x20	Hose Union Tap Guard c/w 20 MDPE Inlet
½"	HUTG15x25	Hose Union Tap Guard c/w 25 MDPE Inlet
	HUSHIELD	Hose Connection/DB Pipe Interrupter Shield
	SP35	Padlock c/w 2 Keys KA - Std Shackles
DN20F	HUG791575	Tap Connector to Inter-Lock Plug
DN15	HUG7903	Hose Connector Inter-Lock Socket
DN20	HUG7933	Hose Connector Inter-Lock Socket



Arrow Valves Ltd

Tel: 01442 823123

www.arrowvalves.co.uk

info@arrowvalves.co.uk

Fax: 01442 823234

Arrow Valves Ltd reserve the right to change specifications, design and materials at any time without notice.
All unit-less dimensions in mm.

© Copyright Arrow Valves Ltd 2004-2009

