

Standpipe Assembly - Model SPED – Tamperproof Hose Bib Tap Category 3 - Datasheet – Page 1 of 2

Description

Tamperproof Standpipe enclosure with Hose Union tap for a hose pipe where the risk is Fluid Category 3.

When closed, the Standpipe conceals the tap and hose connector. Tamper-proofing is achieved using the optional padlock. The Standpipe has two operating positions; mid-position - front cover slides down to expose the Hose Union tap leaving the hose connection concealed, and lower-position - front cover slides down further when filling buckets. *For taller version with retractable shelf for supporting a bucket – see “WaterPoint” - model SPWP.* The hose can be left connected in all positions. A Padlock is required to secure the cover in the top (shut) and mid positions.

The robust galvanised steel housing provides a degree of frost protection. All panels are nylon powder coated dark green, whilst the handle, staples and fasteners are stainless steel.

The Standpipe is supplied fully assembled and tested. A DZR Brass fitting for MDPE is included and all serviceable components are accessible from the front.

The Standpipe can be bolted to a concrete floor or mounted on the optional “Pile”. The galvanised Pile can be buried in soft ground or in an area to be subsequently concreted. M12 stainless bolts are provided to bolt the Pile and Standpipe together. The mating flanges would normally be positioned 30 mm above ground but for aesthetic reasons in gardens the flanges may be buried up to 50 mm beneath the soil surface.

The Standpipe features a low loss Double Check Valve providing Fluid Category 3 protection and affords a good flow even in low pressure areas by virtue of high-flow cartridges. In potentially prolonged freezing conditions - isolate supply at source - and leave tap open.

Connection Pipes

The supply pipe should be laid 750 mm below ground (G7.7). The pile has several slots to allow MDPE pipes to be curved up (radius 20D), thus avoiding underground connections.

The Pile and Standpipe can accommodate two pipes; thus allowing the supply to continue to other Standpipes or fittings. Again all the connections for the Tee are above ground and serviceable - use the optional “2-Pipe Tee Assy”. In polluted ground areas plastic pipe without barrier should not be used. Compression connections for copper tube available.

Specification

Pressure Supply	10 bar max.
Supply Size	20, 25, 32 MDPE (15, 22, 28 Cu) ¾” Male if fitting removed
Outlet tap	High quality heavy pattern bib tap with hose connector (O-ring seal). The common ¾” thread on both the ½” and ¾” tap allows a ¾” hose to be fitted to the ½” tap and vice versa.
Approval (complete)	KIWA UK A020028 <i>See page 2 for dimensions</i>

Materials

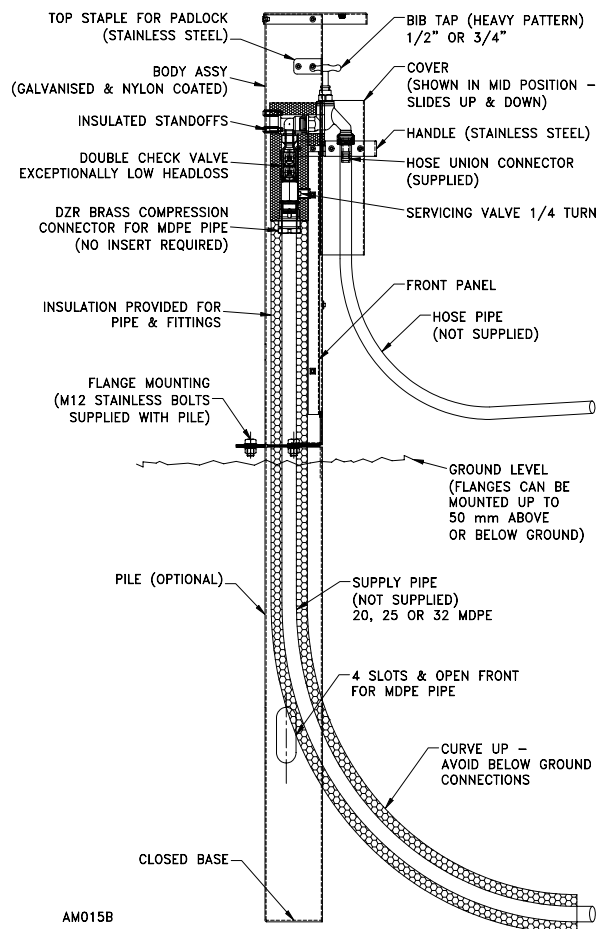
Standpipe and Panels	2 mm steel – galvanised & powder coated nylon dark green RAL6005
Pile	2 mm steel – galvanised hot dip
MDPE Connectors	DZR brass (no insert required)
Fasteners & Handle	Stainless steel A2
Double Check Valve	DZR brass
Bib Tap BS1010/2	Forged brass



Water Regulations

The assembly complies with the requirements of the new Water Regulations when installed and used correctly. The Double Check Valve assembly (type ED132) fitted provides adequate protection against Fluid Category 3 risks - these risks are largely domestic. For commercial applications, use model SPBA, which affords Fluid Category 4. For Category 5 risks (waste bin washing, farm yards, abattoirs, etc) the Standpipe should be supplied via a Break Tank with Type AB air gap - see BTAB pump set. The local water supplier should be consulted regarding the level of protection required.

Side View (Cover shown in mid position)



Applications (Fluid Categories 1 – 3)

- Private, residential & public gardens
- Retail parks
- Golf courses & bowling greens
- Caravan sites
- Garden centres (can be Fluid Cat 4)
- Marinas (often Fluid Category 5 for large craft)
- Schools & car parks
- Garages & vehicle washing (often FC 4 – see SPBA)

Arrow Valves Ltd

Tel: 01442 823123 Fax: 01442 823234

www.arrowvalves.co.uk
info@arrowvalves.co.uk

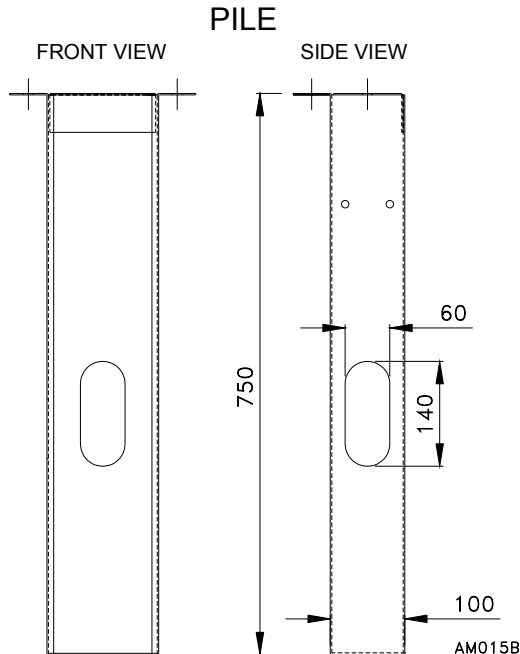
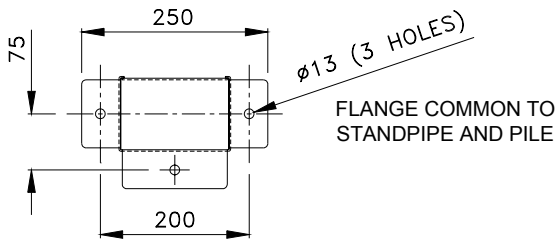
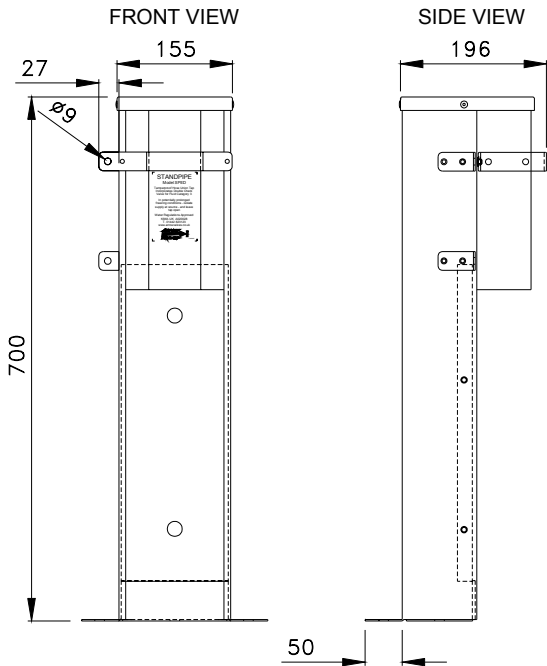
Arrow Valves Ltd reserve the right to change specifications, design and materials at any time without notice. All unit-less dimensions in mm.

© Copyright Arrow Valves Ltd 2001-2009



Standpipe Assembly - Model SPED – Dimensions - Datasheet – Page 2 of 2

DIMENSIONS - SPED

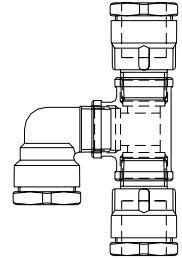


Options

- Pile for mounting Standpipe in soft ground
- Rustproof padlock c/w 2 keys or combination
- 2-Pipe Tee Assy (20 or 25 MDPE connection)
- Powder coating (nylon). Standard colour - dark green. Others available. Special order, min qty 10
- Complete units in stainless steel - special order, min qty 10
- DB Pipe Interrupters (for porous hoses)
- Below ground servicing valve
- Below ground servicing valve and Water Meter
- Standpipe trace heating

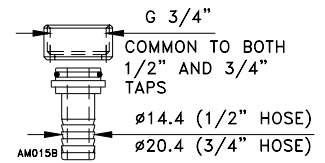
2-Pipe Tee Assy

This assembly allows two pipes to be connected to the Standpipe. Thus enabling "daisy-chaining" to additional standpipes and avoid underground connections. The unit fits inside the Standpipe and is accessible through the front panel. Features DZR brass O-ring and grab ring fittings.



Hose Connectors

The DN15 and DN20 Standpipe is supplied with the corresponding hose connector as standard. The common 3/4" thread on the outlet of the 1/2" and 3/4" Bib Tap allows a 3/4" hose connector to be fitted to the 1/2" tap and vice versa.



Servicing Valve Below Ground - with Optional Meter

Effective frost protection for the winter can be achieved with this below ground servicing valve, which should be closed and the standpipe tap left open. The code for this unit when supplied with a volumetric water meter – BVBGMsize.

For winter use, the Standpipe can be manufactured with trace heating – code SPTH.

Even if ordered without meter (meter connection is blanked off with a disc), the facility remains for a concentric water meter to be fitted later in-situ – code BVBGMsize.

The optional water meter (only) – code WMV3CON.



Codes and Descriptions

Size	Code	Description
1/2"	SPED15x20	1/2" Standpipe Assy Cat 3 c/w 20 MDPE Inlet
1/2"	SPED15X25	1/2" Standpipe Assy Cat 3 c/w 25 MDPE Inlet
3/4"	SPED20x25	3/4" Standpipe Assy Cat 3 c/w 25 MDPE Inlet
	SP35	Padlock c/w 2 Keys KA – Std Shackle
	SPCP1	Squire Padlock Combination - High Anti Rust
20 mm	SP20TEE	2-Pipe Tee Assy for 20 mm MDPE
25 mm	SP25TEE	2-Pipe Tee Assy for 25 mm MDPE
All	SPPILE	Pile for Soft Ground c/w M12 SS Fasteners
DN20	DB20IL15	Pipe Int. DB 1/2" Inter-Lock Hose Conn.
20 mm	BVBGM20	Serv. Valve Below Ground Meter 20 MDPE
20 mm	BVBGM20	Serv. Valve Below Ground Meter 20 MDPE
25 mm	BVBGM25	Serv. Valve Below Ground Meter 25 MDPE
25 mm	BVBGM25	Serv. Valve Below Ground Meter 25 MDPE
All	SPTH	Standpipe Trace Heating Self Regulating

Notes

To specify an over or undersize inlet connection, replace the last two digits. E.g. SPED15x25 is a 1/2" (DN15) Standpipe with 25 mm MDPE inlet. Similarly SPED15x15 is a 1/2" (DN15) Standpipe with 15 mm copper compression inlet.

A Padlock is required to hold the cover in the top and mid positions.

Arrow Valves Ltd

Tel: 01442 823123 Fax: 01442 823234

www.arrowvalves.co.uk
info@arrowvalves.co.uk

Arrow Valves Ltd reserve the right to change specifications, design and materials at any time without notice.
All unit-less dimensions in mm.

© Copyright Arrow Valves Ltd 2001-2009

