

# Single Check Valve

## Model EB202 – Female BSPP - Datasheet

### Description

Single Check Valve with female BSP connections. The ductile iron body is epoxy coated and suitable for wholesome water.

A stainless steel spring closing mechanism allows the valve to operate in any orientation and is immune to water hammer. Water tight closure is achieved at high as well as low pressure by an EPDM seal.

The low headloss characteristics are ideal for non return valve applications.

### Pipe Connections

Female - DN65, 80 & 100 (2½", 3" & 4") with female screwed connections.

### Specification

Pressure (working)	16 bar maximum
DN65 Opening Pressure	0.022 bar (flow down) 0.033 bar (horizontal) 0.044 bar (up)
DN80 & DN100 Opening Pressure	0.019 bar (flow down) 0.032 bar (horizontal) 0.045 bar (up)
Temperature	-10° C min. to 100° C max.

### Materials

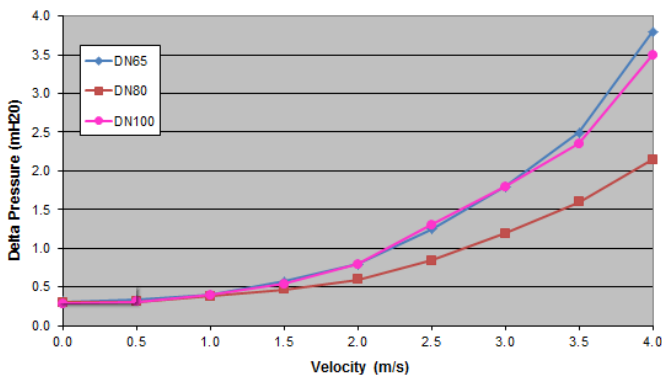
Body	Ductile iron – epoxy coated (Blue)
Springs	Stainless steel 316
Closing System	Bronze
Elastomers	EPDM

### Applications

Backflow prevention for fluids in categories 1 – 2 (refer to Schedule 1 of Water Regulations July 1999). Fluid Category 2 includes -

- Fire sprinkler systems without additives
- Hot water
- Water cooled air conditioning without additives
- Branch to steel pipe
- Domestic softening plant (common salt regeneration)
- Whole site protection as specified by water company

Head Loss / Flow Chart  
Model EB202



### Notes

Other sizes have similar characteristics. Velocity based on flow of water through the bore of copper tube table X. See Flow Table to find the actual flow rate.



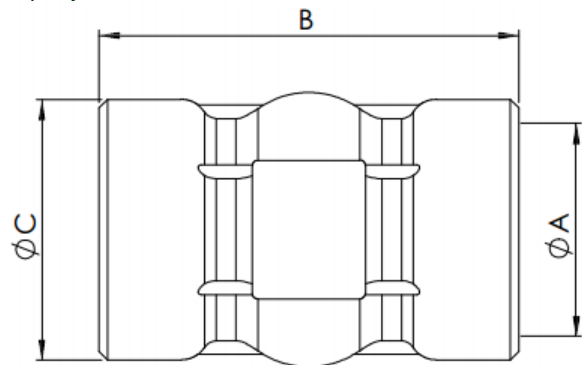
Model EB65FP202

### Water Regulations

Single Check Valves are suitable for backflow protection of Fluid Category 2 risks as defined in the latest Water Regulations – July 1999.

Test points across a single check valve (EB device) are not required by the new Water Regulations.

Single Check Valves must not be buried. However they can be installed in a chamber below ground. The Water Regulations generally require "Point of Use" protection but whole site and zone are also recognised. The local water company can advise.



	ØA	B	ØC	WEIGHT
"	mm	mm	mm	Kg
2½	65	148	97	3.2
3	80	174	125	5.8
4	100	203	150	9.2

### Codes and Descriptions

Size	Code	Description
DN65	EB65FP202	202 Single Check Valve FBSP
DN80	EB80FP202	202 Single Check Valve FBSP
DN100	EB100FP202	202 Single Check Valve FBSP

### Arrow Valves Ltd

Tel: 01442 823123

Fax: 01442 823234

www.arrowvalves.co.uk

Arrow Valves Ltd reserve the right to change specifications, design and materials at any time without notice.

All unit-less dimensions in mm.

© Copyright Arrow Valves Ltd 2001-2019

